

## 1MHz, 2A Step Up Regulator

### General Description

PN2268 is an asynchronous PWM boost converter using a constant frequency peak current mode. An external Schottky diode is needed. At light load, PN2268 works in the light load mode. The supply current during the light mode is 100uA , together with the 200mΩ internal NMOS power transistor guarantees high efficiency in the whole output load current range. Up to 2A peak current, Let PN2268 can provide 1A output load current, which is suitable to use as MID and mobile power supply. The input voltage 3V~25V.The operating frequency is internally set at 1MHz.

The device is available in the small profile SOT23-6L package.

### Applications

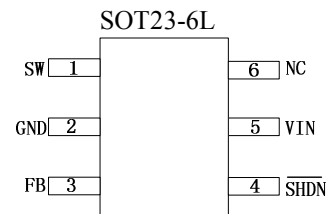
- WLED Drivers
- Networking cards powered from PCI or PCI-express slots

- MID and Mobile Power

### Features

- High Efficiency: Up to 92%
- 1.0MHz Constant Switching Frequency
- Switch current up to 2A
- Low Rdson: 0.2Ω
- Accurate Reference:0.6V
- Tiny External Components
- Space Saving 6-Pin SOT23 Package

### Package



### Typical Application Circuit

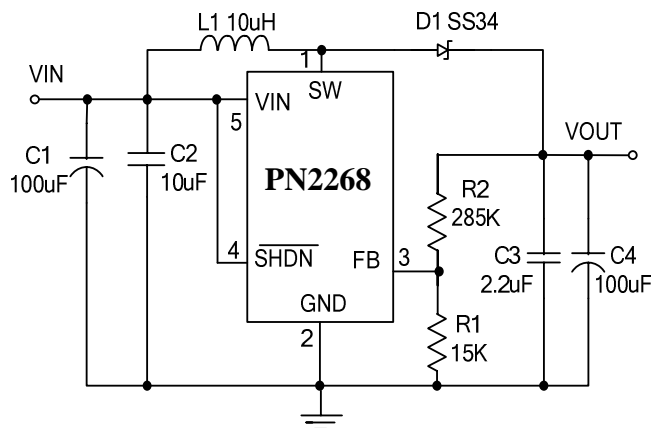


Figure 1. Basic Application Circuit with PN2268

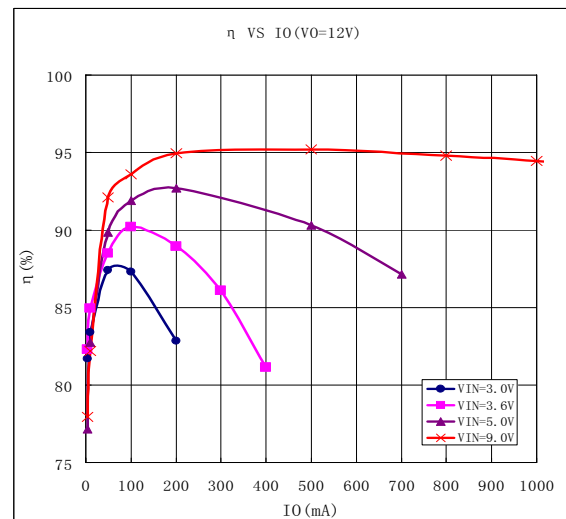


Figure 2. Typical Efficiency Curve